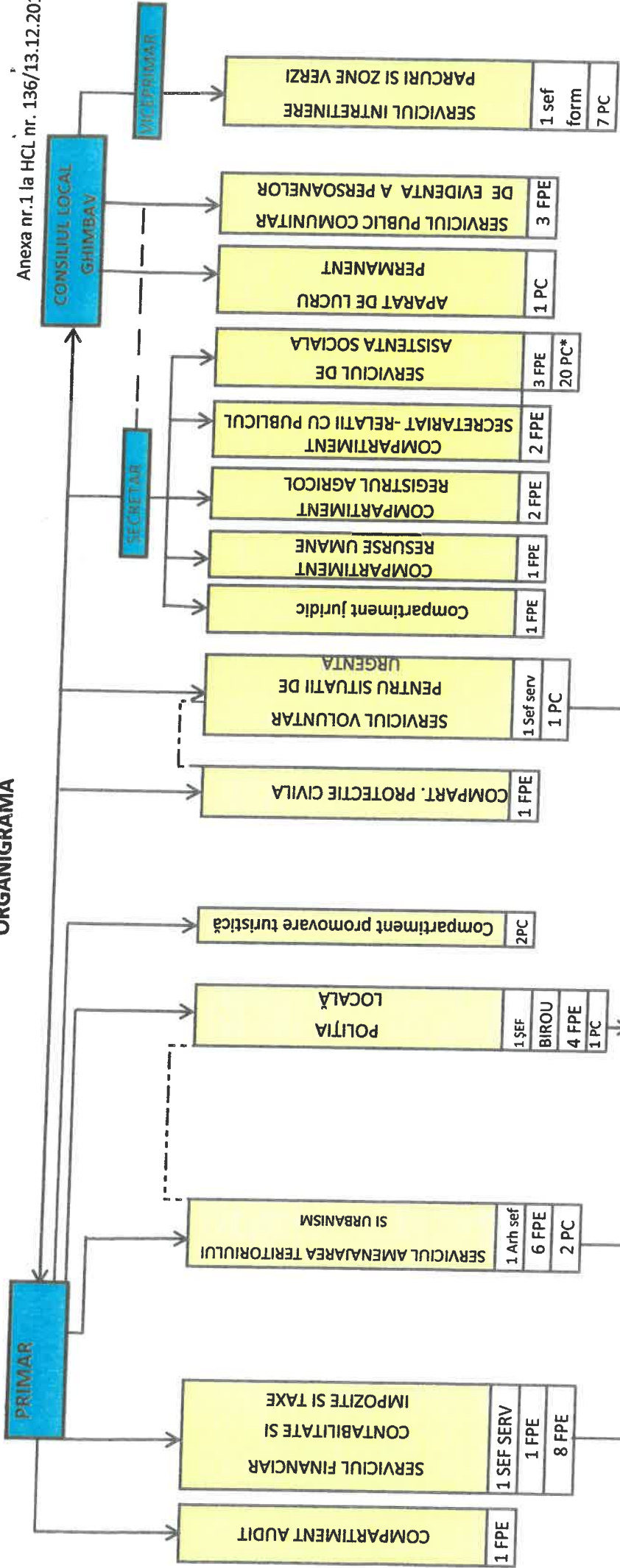
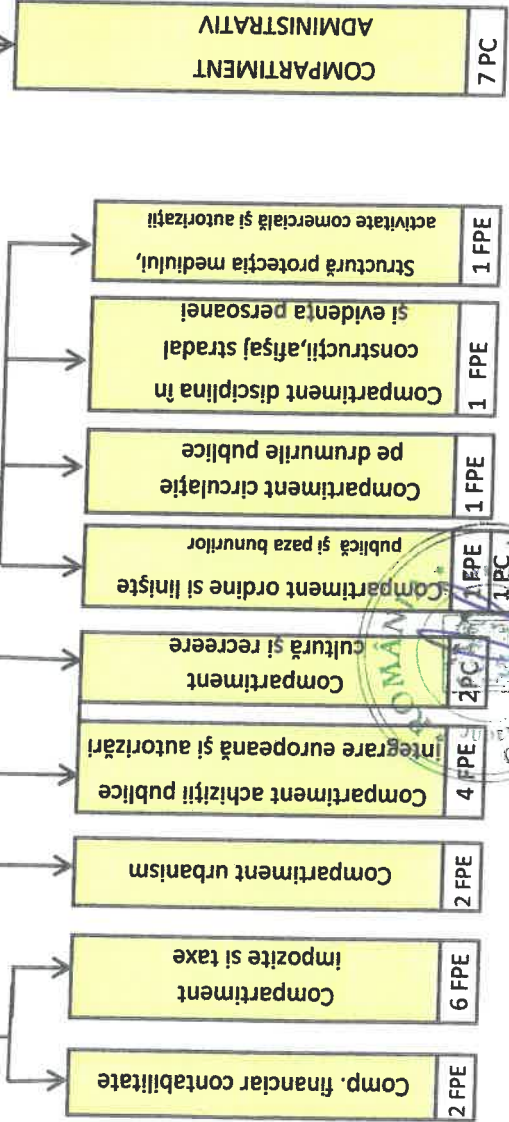


# ORGANIGRAMA

Anexa nr.1 la HCL nr. 136/13.12.201



Total posturi- aparat de specialitate al primarului- 59  
 - aparat permanent de lucru al CL- 1  
 Functii publice de conducere - 4  
 Functii publice de executie - 33  
 Personal contractual- 23



\*cele 20 de posturi personal contractual reprezinta posturi salariate din capitolul de cheltuieli bugetare - asistenta sociala

Președinte de ședință  
 Fluerăș Marian L.

Vizat Secretar  
 Szinatóvics Dáni